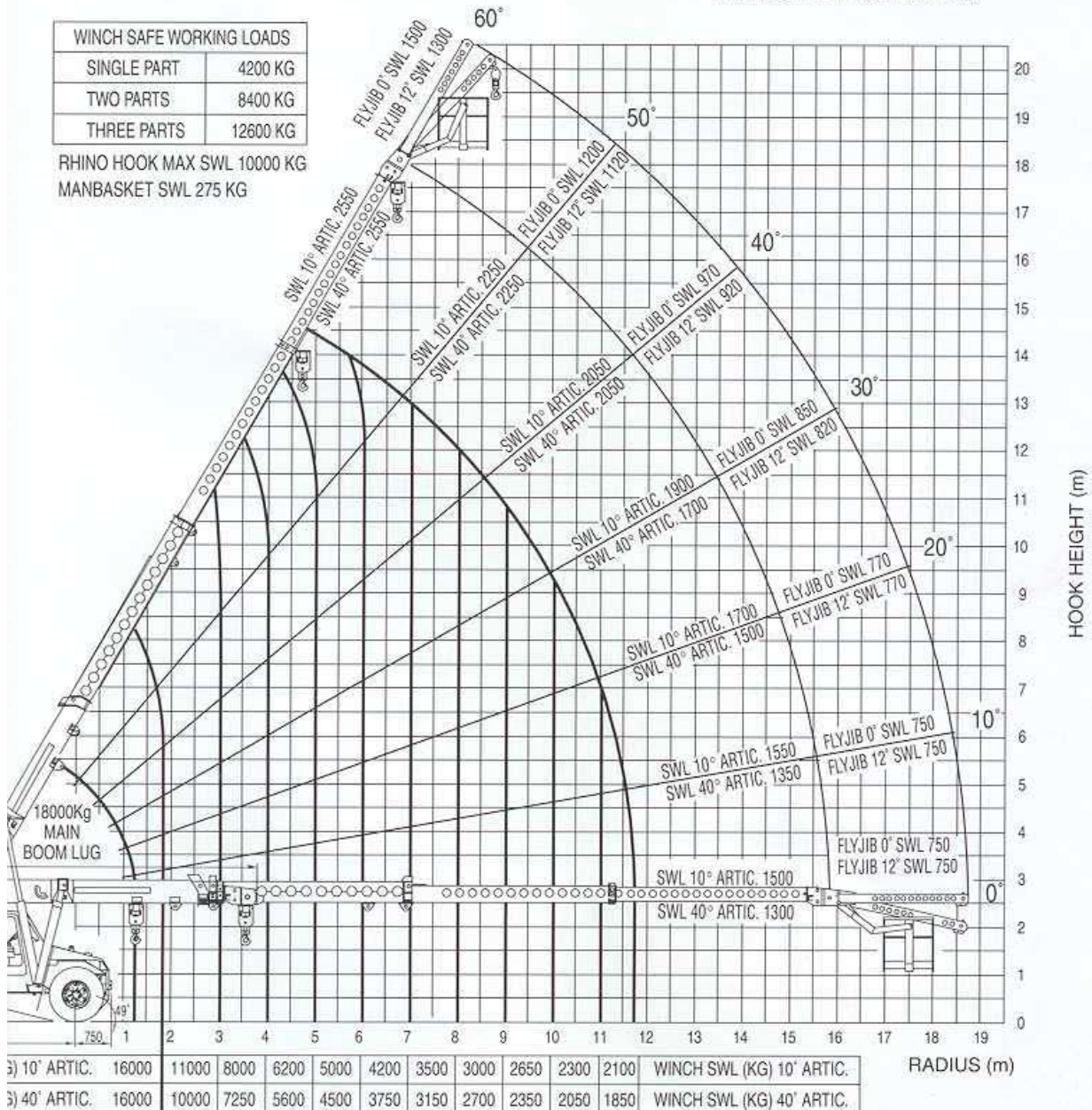




MELBOURNE F1 GRAND PRIX.

WINCH SAFE WORKING LOADS	
SINGLE PART	4200 KG
TWO PARTS	8400 KG
THREE PARTS	12600 KG

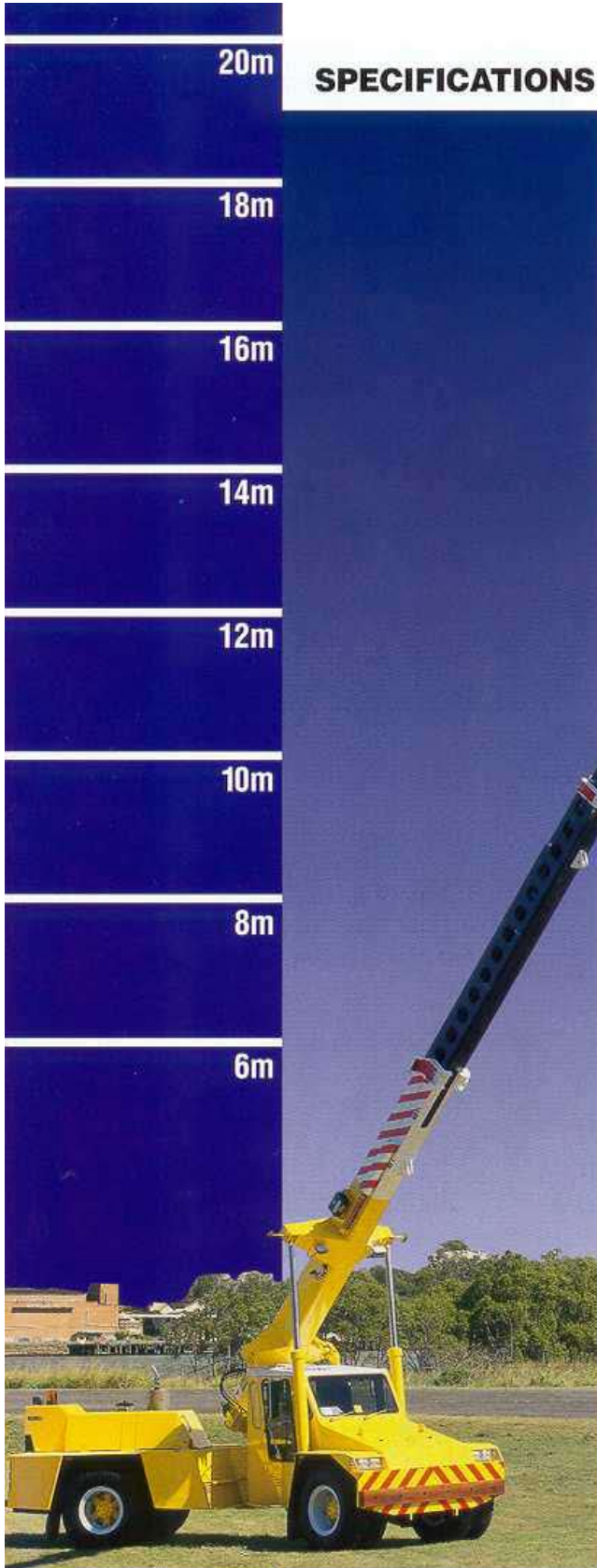
RHINO HOOK MAX SWL 10000 KG
MANBASKET SWL 275 KG



1.8 Metres

NOTE: 1. UNLESS OTHERWISE STATED ALL SWL'S REFER TO LIFTING ON THE WINCH, FOR LIFTING LUG CAPACITIES PLEASE REFER TO THE SPECIFIC LOADCHART.

2. THIS RADIUS CHART IS A SUMMARY OF LOADCHART 16C1204-, REFER TO THE CRANE'S LOADCHART BEFORE ATTEMPTING A LIFT.



SPECIFICATIONS FOR 18 TONNE MODEL

RATED CAPACITY

18 Tonnes at 1.26m radius
16 Tonne at 2.01m radius
1.50 Tonne at 15.80m radius
Hook Height 16.75 metres
Lift Hook block 12.6 tonnes
Single Line 4.2 tonnes

AXLE LOADINGS

Front Axle 8000kg
Rear Axle 11000kg
TOTAL 19000kg

TURNING CIRCLE

Outside
Wheels 7.4 metres

DIMENSIONS

Overall Length
9.67 metres
Overall Width 2.50 metres
Overall Height
3.07 metres

HYDRAULIC WINCH

Line pull with full drum 4.2T
3/2 part fall block or single line, full hook compensation.

CABIN

ROPS type insulated lock up cabin.

ENGINE

Hino H07C-T 6 Cylinder
Turbo Charged
162 kW (217 HP) at 2800 rpm
647 Nm (477 ft.lbf) at 1700 rpm.

TRANSMISSION

Allison MT643
4 Speed fully automatic with lockup available in 3rd/4th whilst driving and 1st-4th in conjunction with the exhaust brake.

TRANSFER CASE

Two (2) speed AIR SHIFT with AIR SHIFT disconnect to REAR wheels.

HYDRAULIC TANK

Capacity 255 litres.

FUEL TANK

Capacity
290 litres.

DRIVE AXLES

Front and rear heavy duty drive axles. Driver engaged air diff lock on front axle.

DRIVE SHAFTS

Spicer Series 1610.

BRAKES

Full air S cam Twin Circuit Brakes front and rear axles. Spring applied on rear axle, Crane operation hold brake on front wheel. Engine exhaust brake.

TYRES

1200 x 20 x 20 PR Duals.

STEERING

Full Power ORBITROL with twin Hydraulic double acting rams. Priority flow from main pump supply plus electro hydraulic emergency supply.

HYDRAULIC PUMP

Load sensing axial piston
126 litre/min.

SUSPENSION

Two (2) Semi elliptic springs on each axle plus TORSION BAR on front axle for stability.

PERFORMANCE

Maximum – 85kph
Gradability – 50%

OPTIONAL EQUIPMENT

- Air Conditioning
- Machinery Hook (10 tonne SWL)
- Spare wheel carrier
- Central greasing
- Fly Jib (2.9m)
- Man Basket
- Spreader Bar
- Six speed synchromesh manual transmission
- Others on application

Specifications subject to change without notice.

PATENTED DESIGN



FRANNA CRANES PTY. LTD. A.C.N. 010 671 048
570 Curtin Avenue Eagle Farm Brisbane Qld 4009 Australia
Telephone: +61 7 3268 7422 Facsimile: +61 7 3268 2489